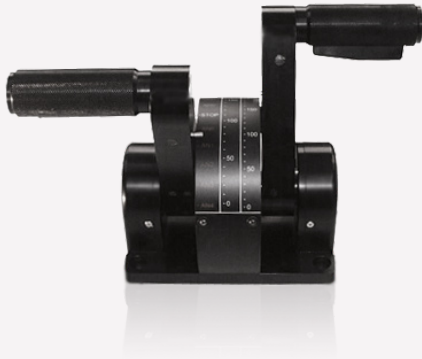


L700 series . Throttle-levers

Wirewound or Conductive plastic potentiometers

Contact less (Hall effect)



L700 series Throttle provide reliability and application versatility in a very robust and compact package.

TECHNICAL CHARACTERISTICS

Military and industrial quality

1 axe

Single or double levers

120° stick deflection angle

Spring or hold position

Potentiometer / contact less sensor

Logics functions on levers

Logics functions in the housing

IP 54 (above panel)

Options proposed :

redundancy of transducers

serial output RS232/422/485, CAN/USB

analogic or numeric output

shapes blocking in option

MAIN APPLICATIONS

Engines for public works

Materials handling

Tracking and flight control

Naval applications

Robotics and industrial

Railway carriage

Visual display

STANDARDS

MIL STD 810 / 461

MIL STD 1250

MIL C 39888 for connectors

GAM EG 13